

Tringa Linear VET



Great things come in small packages

ESAOTE Pie Medical
THE IMAGE OF INNOVATION™

Handheld Diagnostic Power



The Tringa Linear is the newest member to Esaote-Pie Medical's Tringa Family of ultrasound systems. Weighing just 800 grams (< 2 lbs.), the Tringa Linear is small in size, but big in functionality and features. The Tringa Linear was specifically engineered for all aspects of reproductive imaging in bovine and equine, as well as for basic equine tendon imaging.

The unique design allows the system to be worn on the forearm or in a special carrying case around the neck or shoulder, and the external freeze switch adds to the Tringa Linear's ease-of-use in the field. The days of

twisting and turning in an attempt to probe the animal, reach the scanner's controls and actually see the screen are over.





Specifications

Ultrasound Scanning

- Linear array
- Fully digital conversion

Display

- 5" high-resolution VGA LCD
- 256 gray levels

Weight (basic unit)

- 0.8 kg

Probe

- Multi-frequency linear array endorectal (from high resolution to high penetration)

Image Modes

- B-Mode
- B/B-Mode
- B/M-Mode
- M-Mode
- B-zoom

Calculation Packages

- Fetal age tables with report pages (bovine, equine, swine, sheep, llama)
- Animal Science with report pages (hide-fat-loin thickness)
- Tendon measurements with report pages (equine)

Text Annotation

- Patient identification
- User/clinic name

Measurements

- Distance
- Length
- Area and Circumference
- Ellipse
- Angle
- Time
- Velocity
- Heart rate

Image Memory

- Built-in memory card stores up to 320 images

Connectivity

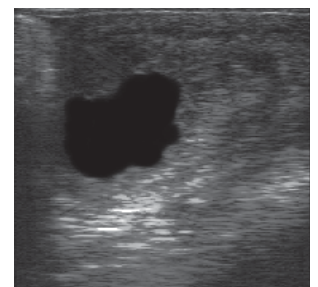
- Bidirectional infrared port for optional PC communication package
- Standard video out

Standard Accessories

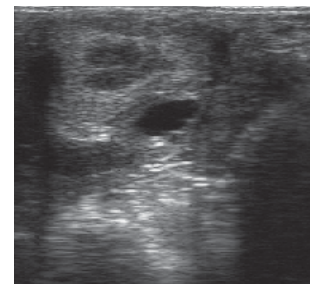
- Storage case
- 12VDC fast-charge battery & charger
- Mounting glove
- Gel

Optional Accessories

- Carrying case
- External freeze & image save switch
- Probe holder
- Probe hand grip
- Additional batteries



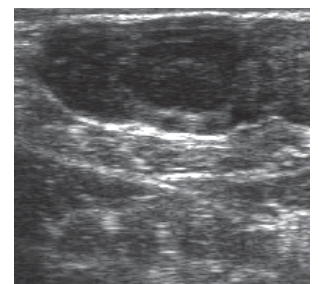
Equine pregnancy



Equine ovary, recent ovulation



Bovine uterus



Bovine ovary with CL



Tringa Linear
VET



ISO 13485: 1996

ISO 9001: 2000

0344

www.esaote-piemedical.com

ESAOTE S.p.A.

Headquarters: Via Siffredi, 58 16153 Genova, ITALY. Phone +39-010-654771, Fax +39-010-6547275

International Activities: Via di Caciolle, 15 50127 Firenze, ITALY. Phone +39-055-422911, Fax +39-055-4229208. E-mail: international.sales@esaote.com

International Veterinary Division: P.le. Medical Equipment, P.O. Box 1132, 6201 BC Maastricht, The Netherlands. E-mail: vet@pie.nl

Официален представител

на Esaote SpA за България



София • Пловдив • Варна

Найновоначелен тел. 0700 16251

Моб. 0896 882958

e-mail: office@sonomedica.bg

www.sonomedica.bg

Tringa Linear
VET



Great things come in small packages

ESAOTE Pie Medical
THE IMAGE OF INNOVATION™

